

- Ink Jet Printers**
 - Hand Held Ink-Jet Printer (IJP-M3S-X)
 - Online Small Ink-Jet Printer (IJP-M3S-O)
 - Large Character Hand Printer (IJP-M3S+/Max)
 - Table Top Ink Jet Label Printer (IJP-X1/X2)
 - Handheld / Online Ink-Jet Printer (IJP-T-360)
 - Biggest Hand Held Ink Jet Printer (IJP-B80)
 - Smallest Colour Ink Jet Printer (IJP-PrintCube)
 - Manual Ink Jet Pen (IJP-PrintPen)
 - Manual Ink Jet Stamp (IJP-JetStamp 970)
 - Industrial On-Line Ink-Jet Printer (IJP-P2128)
 - Large-Character On-Line Printer (IJP-X72)
 - Large-Character Hand Printer (IJP-M10)
 - Large-Character On-Line Printer (IJP-CL7)
 - Multi-Head Egg Jet Printer (IJP-Egg)
 - Compact Hand Held Laser Printer (SLP-L3)
 - Online / Offline Smart Laser Printer (SLP)
- On-Line Coding Machines**
 - On-Line Coder for Packaging Machines (BCC)
 - Hot-Roll Rotary Coder (Like Markem) (HRC)
 - Electro Pneumatic On-Line Coder (EPC)
 - On-Line Hot Foil Coder (HFC)
 - On-Line Continuous Friction Coder (FDC)
 - Auto Carton Coder for Taping Machine (ACC)
 - Conveyorized Product Coder (CEMC)
 - On-Line Motorized Pipe Coder (PPC)
- Off-Line Coding Machines**
 - Table Top Electro Mechanical Coder (EMC)
 - Table Top Hot Foil Coder (HFC)
 - Stacking Auto Feeding High Speed Coder (SCC)
 - Stacking Hot Wax Table Top Coder (TTC)
 - Motorized Pad Printing Machine (PPM)
- Manual Coding Machines**
 - Hand Held Coder for Cartons (HHC)
 - Hand Stamping System for Pouches (HSS)
 - Manual Hot Foil Coder (HFC)
- Packing Machine**
 - Carton Strapping Machine (CSM)
 - Carton Sealing / Taping Machine (CTM)
 - Combined Carton Strapping & Taping (CSTM)
 - Blisters / Skin Packing Machine (BPM/PSP)
 - Stretch Wrapping Sealer (SWM)
 - Tray Stretch Wrapping Machine (TWM)
- Pouch Sealing Machine**
 - Automatic Band Sealer Machines (BSM)
 - Band Sealer with Nitrogen / Vacuum (BSM-G)
 - Heavy Duty Bag Sealing Machine (BSM-W)
 - Pneumatic Bag Sealing Machine (PHS)
 - Pedal Heat Sealer (PFS/DFS)
- Shrink Packing Machine**
 - 2 in 1 Shrink Packing Machine (SPM)
 - Shrink Packing Tunnels (SPT)
 - L-Bar Sealer (LBS)
 - Auto Shrink Packager Web Sealer (SPWS)
- Vacuum Packing Machine**
 - Table Top Vacuum Packaging Machine (TVP)
 - Vacuum Packaging Machine (VPM)
 - Vertical Type Vacuum Packaging (VPM-V)
 - Double Chamber Vacuum Packager (DVP)
 - Mini Vacuum Sealer (MVS)
- Lidding / Capping / Sealing Machine**
 - Induction Sealing Machine (ISM)
 - Cup Heat Sealing Machine (HSM)
 - Manual Lunch Tray Sealer (LTS)
 - Semi-Automatic Cup Sealer Packaging (CPM)
 - Automatic Cup/Tray Lid Sealer (AMS)
 - Cap Locking & Capping Machine (LCM)
 - Tube Crimping / Sealing (TCM/TSM)
- Filling Machines**
 - Semi-Automatic Bottle Filling Machine (BFM)
 - Pneumatic Liquid Filling Machine (LFM)
 - Automatic Bottle Filling Machine (AFM)
 - Paste Filling Machine (PFM)
 - Mini Powder & Granule Filler (PGF)
 - Auto Powder Filling Machine (PAF)
- Label Printers / Applicators**
 - Automatic Vertical Sticker Labeling (AVLM)
 - Automatic Horizontal Sticker Labeling (AHLM)
 - Semi-Automatic Sticker Labeling (SLM)
 - Semi-Automatic Edge Labeling (ELM)
 - Label Roll Printing Machine (LPM)
 - Label Roll Dispenser (LRD)
 - Semi-Automatic Glue Labeling M/C (BLM)
 - Paper Folding Machine (PFM)
- Conveying Systems**
 - Unwinding / Rewinding Machine (WRM)
 - Flat Belt Conveyor Systems (FBC)
 - Auto-Feeding Stacking Conveyor (SCS)
 - Truck Loading Conveyor (TLC)
- Consumables & Accessories**



LARGE CHARACTER HAND-HELD INK JET PRINTER - MODEL IJP-M10

Industrial Hand Held Non-Contact Large Character Ink Jet Printer Model IJP – M10, which is a **Zero Maintenance**, Mains / Battery Powered **TWO line** (character height 25 to 63 mm) Printer & can be used on Porous / Non-Porous products to print B.No., Exp.Date, Time, **Serial No. (AGMARK), Logos**, etc. on labels, cartons, pouches, drums, containers, etc. It is an ultra-compact and light inkjet printer equipped with a print-head with electromagnetic valves. It has full keyboard & display for input or Bluetooth control for programming through PC with user-friendly software where it can print 2 lines Data & all Computer Fonts (local languages) at a very low price.

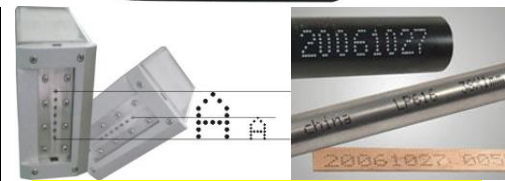


IJP-SK2000 / GT250 FEATURES:

5x5 1 Line	abcd	5x7 1 Line	ABC123
5x5 2 Line Max. 16mm	9899	5x7 2 Line Max. 24mm	ABCDEF 123456
5x5 * 3 Line Max. 16mm	2789	10x16 1 Line Max. 50mm	ABC
16x16 1 Line Max. 50mm Height			

SPECIFICATIONS:

Coder Model	Ink Jet Printer IJP – M10
Display	3.5" LCD Touch Screen display.
Languages	English, Chinese, Turkish, Arabic, Korean, Italian
Input Device	WiFi connect transmission, USB Flash Drive to Import Database, External Variable Data Printing & Touch Screen
Printable Images	Alphanumeric, Logo, Date/Time, Counter/Serial No., etc.
Printing Area	1 to 2 lines from 25 to 63 mm high (Adjustable).
Printing Matrix	16 x 10, 14 x 10, 12 x 8, 9 x 6, 7 x 5
Message Capacity	1000 memory location, No limitation to length per message
Printing Speed	Max. 70 meters/min for 1 to 2 line printing
Prints Using	16 Nozzle electromagnetic valve Print-head for spraying ink
Print Distance	12 mm to 30 mm from substrate.
Inking Medium	200 cc ink in Cartridge form, 250 g ± 5 g
Printing Medium	MEK / Water based inks (black, red*, yellow*, white*, etc.)
Ink Drying Time	Min. 3 to 5 seconds on plastics & laminates.
Impressions	Appx. 1 lakh char. of 25 mm per cartridge of ink.
Operating Range	5 ~ +45°C, 10% - 90% RH, non-condensing.
Supply Voltage	100 - 240 Vac, 50/60 Hz, 1.6A
Dimensions	114x76x60 mm / 212x135x120 mm
Weight	0.49 Kgs for machine / 1.0 Kg excluding cartridge.



VIDEO: https://youtu.be/n5b_4DMezCo



VIDEO: <https://youtu.be/gzdhSTk8MGw>



	IJP-M10 Ink Jet Printer	Other CIJ Ink Jet Printers Available	Advantage of our Ink-Jet Printer
A.	Fully Electronic. No mechanical parts.	Air Pump, Viscosity Control Unit, etc. Rs. 80,000/-	Mechanical parts get worn out & fail in time.
B.	No Filters for Ink.	Filter has to be changed regularly. Rs. 20,000/- ea.	Very high replacement filter cost saved.
C.	Absolute ZERO maintenance cost.	Very High Maintenance Cost. AMC Rs. 25,000/-	Huge Cost saving every Year. No AMC.
D.	Push-Fit pre-mix Ink Cartridge.	Separate Ink, Make-Up & Solvent Bottles.	Ease of use for the Operator.

**QUALITY
RELIABILITY
COMMITMENT**

Delhi Office: HEAD OFFICE=>
7/2 Ashoka Chambers, Opp. Pillar No. 150,
Below Rajendra Place Metro Station,
Pusa Road, New Delhi-110060, INDIA.
Ph: 011-47539558, del@coding-india.com

**201, Triumph Industrial Estate, Pandit Motilal Nehru Road,
(IIT Bhatti – Panch Bawadi), Near Oberoi Mall Signal,
Goregaon (E), Mumbai - 400 063, INDIA. WeChat: SamirGarg
Ph: (+91-22) 42663228, 40123228, 28766350/51/52, 28756353
Website: www.CodingMarking.com, www.PrintPackaging.In
Email: SamirGarg.AIMS@gmail.com, info@coding-india.com**